



LIBRARY 101

The Lemieux Library and McGoldrick Learning Commons is six floors of book shelves, information desks, study rooms, computer labs, tutoring spaces, classrooms, and helpful library faculty and staff. Our homepage is: www.seattleu.edu/library

1 WHAT DO LIBRARIANS DO?

Librarians help students find books and articles, search databases, refine research topics, and gain skills in evaluating resources. In short, librarians are here to help, don't be afraid to ask for their assistance!



2 STUDENT PEER RESEARCH CONSULTANTS (SPRCS)

SPRCs are available Sun - Fri at the iDesk on the 2nd floor. These trained student experts can find the resources you need and help you book study rooms, schedule time with a librarian, and more!

<https://libguides.seattleu.edu/sprcs>



3 RESEARCH GUIDES

Research Guides, or LibGuides, are detailed guides to subject-specific databases, articles, or materials for a department, school, college, or specific course created by librarians. They have lots of links, useful information, and easy ways to contact a librarian.

<https://libguides.seattleu.edu/>



4 GLOBAL INTERLIBRARY LOAN

If you need a book or article SU doesn't have, submit an ILL request and get it from another library within the worldwide network at no cost to students!

<https://libguides.seattleu.edu/illiad>



5 REGIONAL INTERLIBRARY LOAN (SUMMIT)

Trouble finding what you need? Request physical books or media from the Orbis Cascade Alliance, a PNW partnership of academic libraries that share resources within just days of your request. Paid for by the library and free for students!

<https://libguides.seattleu.edu/borrowing/summit>





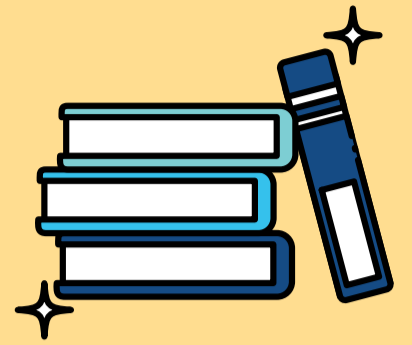
LIBRARY 101

6

LEARNING ASSISTANCE PROGRAMS (LAP)

Peer tutoring, facilitated study groups, learning strategy workshops with specialists, and more can all be found at LAP on the 2nd floor.

www.seattleu.edu/learning-assistance/

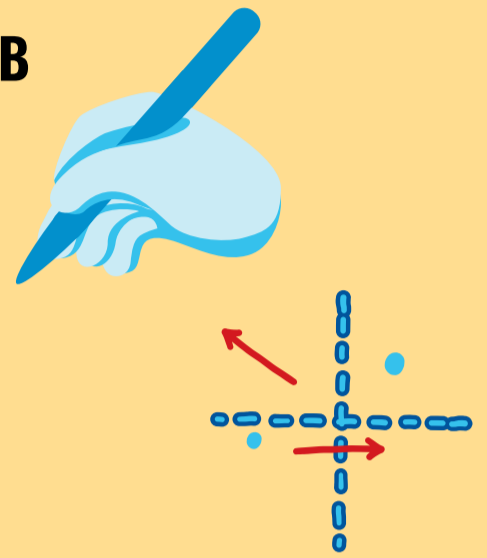


7

THE WRITING CENTER & MATH LAB

The Writing Center and Math Lab provide focused tutoring by trained students on the 2nd floor of the library. Drop in hours and appointments available:

www.seattleu.edu/learningcommons/



8

COURSE RESERVES

Course reserves are supplemental books, articles, etc., that instructors reserve for specific classes. Reserves may be available online or on short-term loan from the Library's Circulation Desk.

https://libguides.seattleu.edu/course_reserves/



9

THE MEDIA PRODUCTION CENTER

Located on the 1st floor, the MPC hosts a variety of computer, photo, video, and audio equipment available for use in the MPC studios or for loan.

<https://libguides.seattleu.edu/mpc>

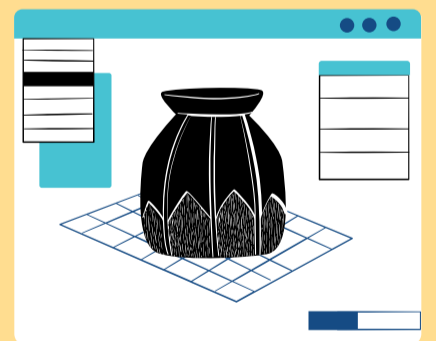


10

THE BILLODUE MAKERSPACE

The Billodue Makerspace is located in the Sinegal Center, and has workshops on using 3D printers, laser-cutters, sewing machines, embroidery, jewelry making, and more! All students and skill levels welcome.

www.seattleu.edu/library/billodue-makerspace/



HOW CAN I GET HELP?

- Try the 24/7 library chatbox on our homepage:
www.seattleu.edu/library/
- Email us at askalibrarian@seattleu.edu
- Come by the 2nd floor iDesk and talk with our Student Peer Research Consultants.
- Make an appointment to meet with a librarian in person or online.